



You can be there...inPerson

We are pleased to present the inPerson™ Conferencing experience from Creative. InPerson Conferencing is designed to provide high quality visual and audio experiences to make interactions natural.

Enhance your communications and increase productivity with inPerson Conferencing.

Contact Information

Worldwide Corporate Headquarters

Creative Technology Ltd
31 International Business Park
Creative Resource
Singapore 609921
Tel: +65 6895 4000
Fax: +65 6895 4999

US Headquarters

Creative Labs, Inc.
1901 McCarthy Boulevard
Milpitas, CA 95035
Tel: +1-408-428-6600
Fax: +1-408-428-6628

Have an inPerson representative contact you

Please register at www.inperson.creative.com/contact and we will contact you shortly.

Find out more about inPerson Conferencing

Please visit www.inperson.creative.com



High Quality Video
Conferencing Made Easy

You Can Be There
inPerson™

CREATIVE

You Can Be There
inPerson™

inperson.creative.com

© 2008 Creative Technology Ltd. All rights reserved. Creative, the Creative logo and inPerson are trademarks or registered trademarks of Creative Technology Ltd in the U.S. and/or other countries. All other trademarks are the property of their respective owners. Design and specifications are subject to change without prior notice.
PN 04VF00001022 Rev B (FP Feb08)

Communicate effectively with inPerson Conferencing

inPerson Video Technology

Stunning LCD display

Supports more than 16 million colors so you can clearly see the facial expressions and body language of participants during multiple party meetings.

Excellent low-light performance

The high-grade sensor delivers superb low-light performance without compromising image quality, perfect when you're joining the meeting in less than ideal lighting conditions.

Wide-angle precision glass lens

inPerson features a wide-angle precision glass lens built into a rotating bezel that offers excellent image quality and flexibility.

High-quality video output

You can inPerson conference on the built-in screen or output high-quality video to a flat panel, TV or projector screen for a life-size presence in any important meeting.



inPerson Audio Technology

Voice technology

Equipped with dual microphones, Noise Cancellation and Acoustic Echo Cancellation technologies for crystal clear voice, the sound quality of inPerson is great for one-on-one or group meetings, even if you're several meters away. For a more private conversation, you can even connect your own headset with microphone through the built-in jack.

High-quality audio output

The built-in speaker works great for one-on-one or small group meetings. For bigger audiences, you can connect the inPerson's audio output to a speaker system for greater effect.



Be Green. Be Cost Effective.

Reduce your carbon footprint

With inPerson you can have your most fuel-efficient meetings ever. Improve your productivity by spending your time closing the deal instead of logging hours and miles just to get to the meeting.

A fraction of the cost of past-generation video conferencing systems

inPerson provides a breakthrough in cost with such high quality and flexibility that companies can now equip virtually all of their meeting rooms and communicate with customers and vendors at a dramatically lower cost than with past-generation video conferencing systems.

Communicating effectively with added flexibility

With a monthly service plan, you get free inPerson Conferencing with any other inPerson. You can even call out to a mobile or standard phone at a very low cost per minute. This provides greater calling flexibility and huge savings on both phone and video conferencing charges.

Multi-party capability

Make challenging meeting arrangements simpler and more cost effective! You will not be bound by geographical or technological limitations. inPerson Conferencing supports up to four people in a multi-party session and add up to two additional callers through an audio only connection.

inPerson Conferencing is easy

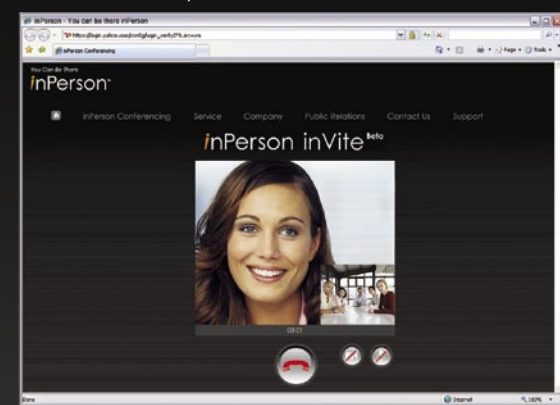
Ease of use

inPerson is easy to set up and will automatically create your inPerson Conferencing account. inPerson also has automatic call answering capabilities, automatic login and keeps itself current by doing automatic firmware updates. inPerson is easy to use too with its Contact List, Speed Dial and Call History features.



Stay in contact with inVite

Simply send your inVite URL to your non-inPerson contact and let them call you on your inPerson via the web instantly.



Wi-Fi or LAN connection

For inPerson Conferencing from any place that has open Wi-Fi (802.11b/g) or Ethernet access.



Intuitive inPerson interface

A very simple keypad with color-coded control buttons enables quick and easy access to contacts and menu choices.



SD memory card support

Display photos from your SD card and turns your inPerson into a Digital Photo Album easily. You can also save or import inPerson contact list easily.



inPerson Connect Technology

Designed to help ensure that you get a reliable, fast and easy connection to inPerson Conferencing.

Battery or AC power

With the rechargeable Li-ion battery pack accessory, inPerson goes wherever you go.



Wireless remote

Designed with all the same buttons included on inPerson for control from anywhere in the room.



Compact and lightweight

inPerson is lightweight (27 oz without battery, 32 oz with battery) and measures only 7.6" x 5.9" x 1.9", so it's easy to move around the office or fit into a bag or briefcase.



OFFICE



HOME



PORTABLE

Internet
SIP Server

PRODUCT SPECIFICATIONS

Dimension	(W x D x H) 7.6" x 5.9" x 1.9" (194.3 mm x 150.5 mm x 48 mm)
Sensor	Image Sensor Color VGA CMOS (5.04 µm active square pixels)
Lens	Lens Precision glass lens, F/2.0 Effective focal range 30 cm to infinity
Field of View	Field of View 76° ultra wide angle
Display	LCD 7", Color Display 16.7 million colors
Voice	Microphone Built-in hardware AEC with dual microphones
Resolution	Video Resolution 640 x 480 (VGA), 352 x 288 (CIF), 320 x 240, (QVGA), 176 x 144 (QCIF)
Exposure	Automatic & manual adjustment
White Balance	Automatic & manual (Auto, Fluorescent, Incandescent, Outdoors) adjustment
Power	Power Source AC/DC power adapter
Battery	Rechargeable Lithium-ion battery
Power Frequency Band	50/60 Hz
Video Format	Video codec support H.264, H.263, H.263+
Audio Format	Audio codec support dvi4, ilbc, G.711 and telephony tone signalling (rfc2833)
Communication Protocol	SIP/SDP, RTP/RTCP, STUN & ICE
Network Protocol	UDP, TCP, ARP, DHCP, SNTP, ICMP
Network Bandwidth	From 64Kbps up to 2Mbps
Ethernet	10/100 Base-T
Wireless	Wireless Standards Compliance IEEE 802.11b and IEEE 802.11g
Encryption	Wireless Security WEP (64/128-bits), WPA-PAK (TKIP), WPA-PSK (AES)
Additional Features	Screen Saver, International Clock with online Sync-up, Photo Preview (SD & Main memory), Photo Capture
Memory	SD Card slot